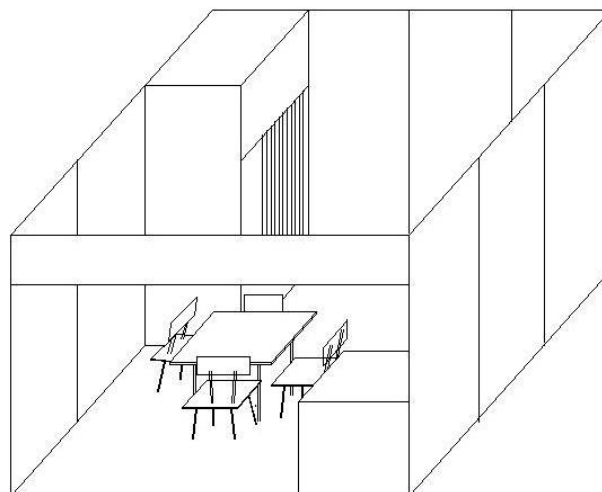
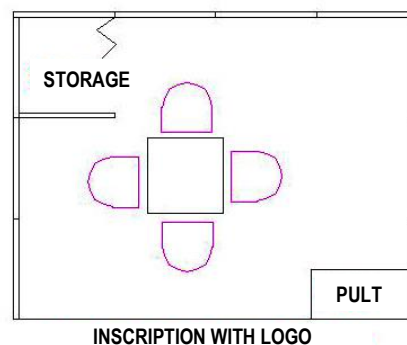


STANDARD EQUIPMENT include:

- Basic construction (octanorm walls – partition walls 100 x 240 cm)
- Storage
- Carpet
- Table (diameter 75 cm)
- Chairs
- Desk (100 x 100 x 90 cm)
- Info desk (100 x 50 x 90 cm)
- Spot light
- Name panel - logo (196,5 x 22 cm)
- Electric connection 220 V with single-phase socket



Exhibition space (stand) equipment is proportionally increased depending on the size of the exhibition space (stand), according to the following table::

ELEMENTS	9-11m ²	12-20 m ²	21-40 m ²	41-60 m ²	61-80 m ²	81 m ² & more
Octanorm walls - partition walls 100 x 240 cm	according the surface of the stand					
Storage		2 m ²	4 m ²	6 m ²	8 m ²	9 m ²
Carpet	full surface of the exhibition space (stand)					
Table (diameter of 75 cm)	1	2	3	4	5	6
Chair	4	6	9	12	16	18
Desk 100 x 100 x 90 cm		1	2	4	6	8
Info desk 100 x 50 x 90 cm	1	1	2	3	4	4
Name panel - logo 196,5 x 22 cm	every open side of the stand					
Spot light	1	2	3	4	5	6
Single-phase socket	1	1	2	3	4	5